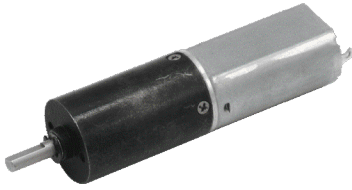
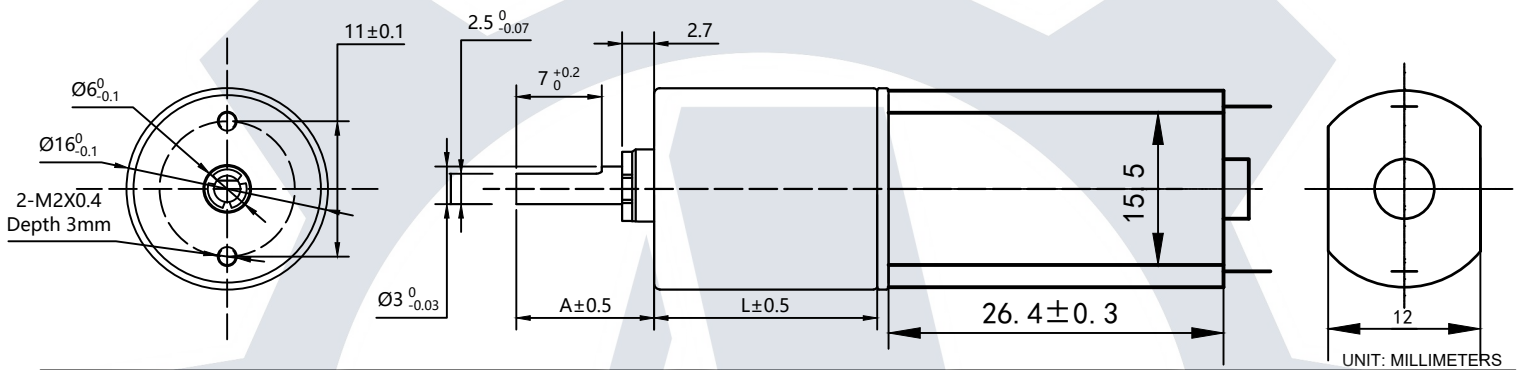


FAPG16-050



Number of stages	1	2	3	4	5
Reduction Ratio(i)	4, 5	16, 19, 23	64, 76, 90, 107	256, 304, 361, 428, 509, 688	1024, 1216, 1444, 1715
Gearbox Length L (mm)	12.2	15.8	19.4	23.0	26.6
Shaft length A (mm)	Length and shape customizable				
Breaking Torque(kgf.cm)	3.0	4.5	6.0	7.5	9.0
Gearbox Efficiency	80%	70%	60%	50%	40%

外形尺寸 DIMENSION



直流行星减速电机参数

PLANETARY GEARED MICRO DC MOTOR SPECS (voltage, current, torque, etc free customization)

电压 Voltage	减速比 Gear Ratio	1/4	1/5	1/16	1/19	1/23	1/64	1/76	1/90	1/107	1/256	1/304	1/361	1/509
6V	额定扭力 kgf.cm Rated Torque	0.03	0.04	0.11	0.13	0.16	0.38	0.46	0.54	0.64	1.28	1.52	1.81	2.55
	额定转速 RPM Rated Speed	2500	2000	625	526	435	156	132	111	93	39	33	28	20
	瞬间容许扭力 kgf.cm Max Allowable Moment Torque	1.5	1.5	2.0	2.0	2.0	3.5	3.5	3.5	3.5	3.5	3.5	3.5	3.5
	空载转速 RPM No Load Speed	3125	2500.0	781.3	657.9	543.5	195.3	164.5	138.9	116.8	48.8	41.1	34.6	24.6
12V	额定扭力 kgf.cm Rated Torque	0.03	0.04	0.11	0.13	0.16	0.38	0.46	0.54	0.64	1.28	1.52	1.81	2.55
	额定转速 RPM Rated Speed	2425	1940	606	511	422	152	128	108	91	38	32	27	19
	瞬间容许扭力 kgf.cm Max Allowable Moment Torque	1.5	1.5	2.0	2.0	2.0	3.5	3.5	3.5	3.5	3.5	3.5	3.5	3.5
	空载转速 RPM No Load Speed	3200.0	2560.0	800.0	673.7	556.5	200.0	168.4	142.2	119.6	50.0	42.1	35.5	25.1

电机参数 MICRO DC MOTOR SPECS (voltage, current, torque, etc free customization)

型号 Model	额定电压 Rated Voltage	空载 No Load		额定负载 RATED LOAD					堵转 Stall	
		转速 Speed	电流 Current	转速 Speed	电流 Current	扭矩 Torque	输出功率 Output	效率 Efficiency	扭矩 Torque	电流 Current
		RPM	A	RPM	A	gf.cm	W	%	gf.cm	A
FAFF-050SH-13120	6	12500	0.05	10000	0.26	10	1.03	66	50	1.3
FAFF-050SH-08240	12	12800	0.04	9700	0.15	10	0.99	55	41	0.55