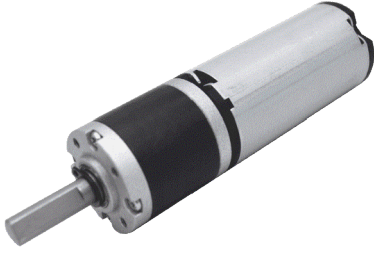
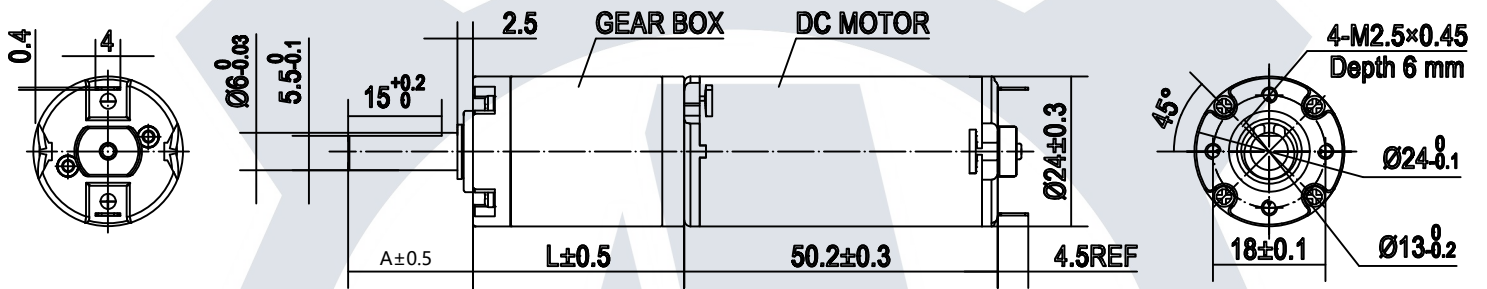


FAPG24-290



Number of stages	1	2	3	4	5
Reduction Ratio(i)	4, 5	15, 18, 22	57, 69, 83, 100	221, 266, 320, 334, 462	854, 1026, 1234, 1483
Gearbox Length L (mm)	19.0	26.4	33.8	41.2	48.6
Shaft length A (mm)	Length and shape customizable				
Breaking Torque(kgf.cm)	3.5	6.5	35	35	40
Gearbox Efficiency	80%	70%	60%	50%	40%

外形尺寸 DIMENSION



UNIT: MILLIMETERS

直流行星减速电机参数 PLANETARY GEARED MICRO DC MOTOR SPECS (voltage, current, torque, etc free customization)

电压 Voltage	减速比 Gear Ratio	1/4	1/5	1/15	1/18	1/22	1/57	1/69	1/83	1/100	1/221	1/266	1/334	1/462
12V	额定扭力 kgf.cm Rated Torque	0.28	0.35	0.92	1.11	1.36	3.01	3.64	4.38	5.28	9.72	11.70	14.70	20.33
	额定转速 RPM Rated Speed	1750	1400	467	389	318	123	101	84	70	32	26	21	15
	瞬间容许扭力 kgf.cm Max Allowable Moment Torque	2.0	2.0	3.5	3.5	3.5	12.5	12.5	12.5	12.5	35.0	35.0	35.0	35.0
	空载转速 RPM No Load Speed	2000	1600.0	533.3	444.4	363.6	140.4	115.9	96.4	80.0	36.2	30.1	24.0	17.3
24V	额定扭力 kgf.cm Rated Torque	0.27	0.34	0.88	1.06	1.29	2.87	3.48	4.18	5.04	9.28	11.17	14.03	19.40
	额定转速 RPM Rated Speed	1750	1400	467	389	318	123	101	84	70	32	26	21	15
	瞬间容许扭力 kgf.cm Max Allowable Moment Torque	2.0	2.0	3.5	3.5	3.5	12.5	12.5	12.5	12.5	35.0	35.0	35.0	35.0
	空载转速 RPM No Load Speed	2000.0	1600.0	533.3	444.4	363.6	140.4	115.9	96.4	80.0	36.2	30.1	24.0	17.3

电机参数 MICRO DC MOTOR SPECS (voltage, current, torque, etc free customization)

型号 Model	额定电压 Rated Voltage	空载 No Load		额定负载 RATED LOAD					堵转 Stall	
		转速 Speed	电流 Current	转速 Speed	电流 Current	扭矩 Torque	输出功率 Output	效率 Efficiency	扭矩 Torque	电流 Current
		RPM	A	RPM	A	gf.cm	W	%	gf.cm	A
FARC-290-V1	12	8000	0.35	7000	1	88	6.3	52.7	669	6.6
FARC-290-V2	24	8000	0.15	7000	0.5	84	5.7	50.3	614	3